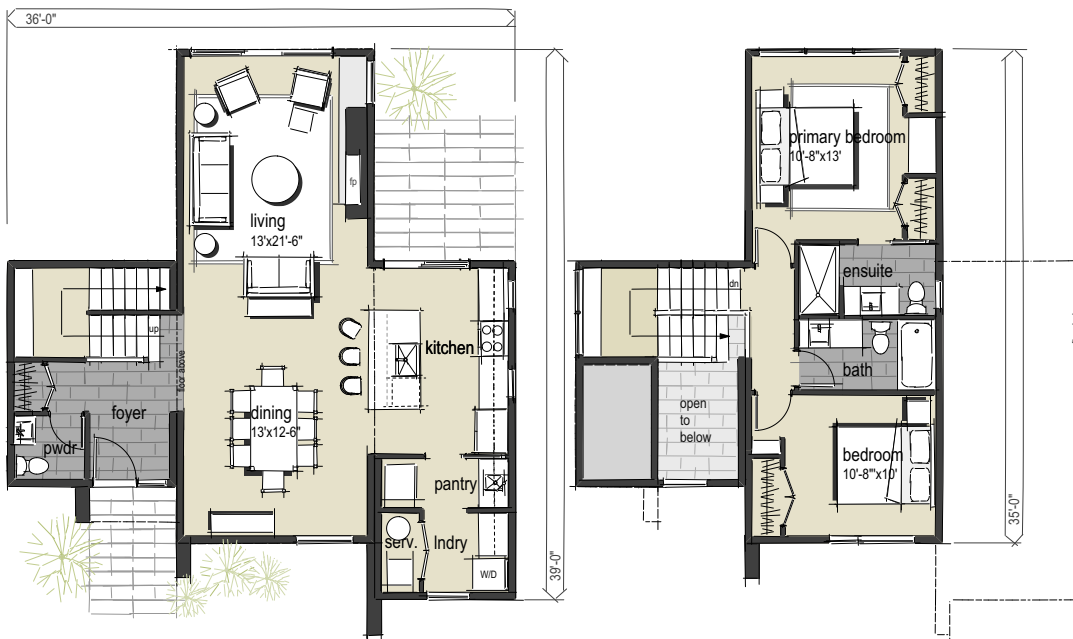


# The Dado

A CIP Modular™ Woodsmith Series Home

*Our largest two storey modular home, this two bedroom, two and a half bathroom home features an inviting entrance with high ceilings, floor to ceiling windows, large open concept living area, and big, bright bedrooms.*



MAIN FLOOR PLAN

UPPER FLOOR PLAN

**TOTAL AREA**  
**1416 SQ.FT.**

**OVERALL**  
**36' x 39'**

**FOR MORE INFORMATION:**

250-753-8550

[sales@cipmodular.ca](mailto:sales@cipmodular.ca)

1868 Fielding Road  
Nanaimo, BC V9X 1T5

